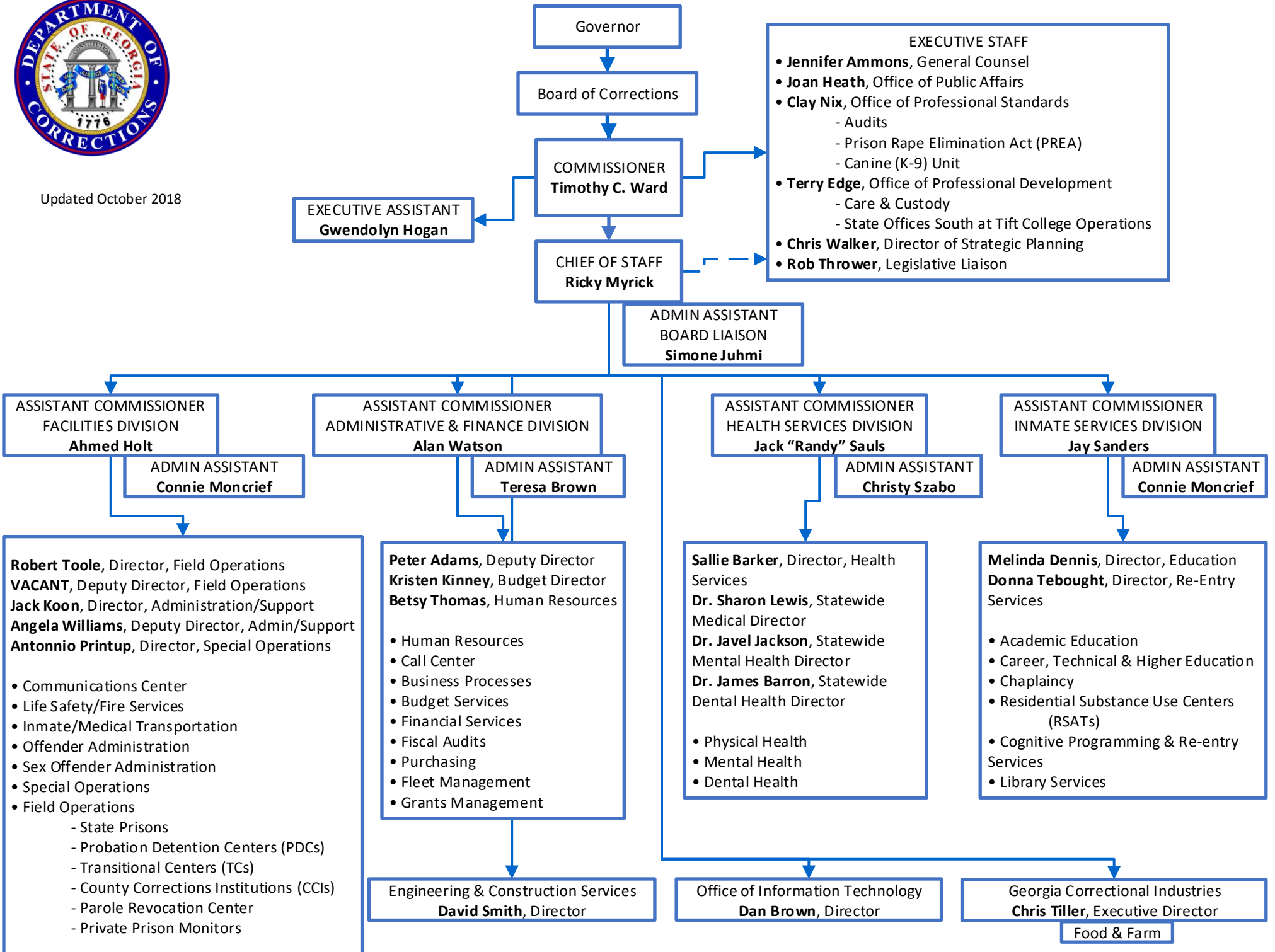




Updated October 2018



Governor

Board of Corrections

COMMISSIONER
Timothy C. Ward

EXECUTIVE ASSISTANT
Gwendolyn Hogan

CHIEF OF STAFF
Ricky Myrick

EXECUTIVE STAFF

- **Jennifer Ammons**, General Counsel
- **Joan Heath**, Office of Public Affairs
- **Clay Nix**, Office of Professional Standards
 - Audits
 - Prison Rape Elimination Act (PREA)
 - Canine (K-9) Unit
- **Terry Edge**, Office of Professional Development
 - Care & Custody
 - State Offices South at Tift College Operations
- **Chris Walker**, Director of Strategic Planning
- **Rob Thrower**, Legislative Liaison

ADMIN ASSISTANT
BOARD LIAISON
Simone Juhmi

ASSISTANT COMMISSIONER
FACILITIES DIVISION
Ahmed Holt

ASSISTANT COMMISSIONER
ADMINISTRATIVE & FINANCE DIVISION
Alan Watson

ASSISTANT COMMISSIONER
HEALTH SERVICES DIVISION
Jack "Randy" Sauls

ASSISTANT COMMISSIONER
INMATE SERVICES DIVISION
Jay Sanders

ADMIN ASSISTANT
Connie Moncrief

ADMIN ASSISTANT
Teresa Brown

ADMIN ASSISTANT
Christy Szabo

ADMIN ASSISTANT
Connie Moncrief

Robert Toole, Director, Field Operations
VACANT, Deputy Director, Field Operations
Jack Koon, Director, Administration/Support
Angela Williams, Deputy Director, Admin/Support
Antonnio Printup, Director, Special Operations

- Communications Center
- Life Safety/Fire Services
- Inmate/Medical Transportation
- Offender Administration
- Sex Offender Administration
- Special Operations
- Field Operations
 - State Prisons
 - Probation Detention Centers (PDCs)
 - Transitional Centers (TCs)
 - County Corrections Institutions (CCIs)
 - Parole Revocation Center
 - Private Prison Monitors

Peter Adams, Deputy Director
Kristen Kinney, Budget Director
Betsy Thomas, Human Resources

- Human Resources
- Call Center
- Business Processes
- Budget Services
- Financial Services
- Fiscal Audits
- Purchasing
- Fleet Management
- Grants Management

Engineering & Construction Services
David Smith, Director

Sallie Barker, Director, Health Services
Dr. Sharon Lewis, Statewide Medical Director
Dr. Javel Jackson, Statewide Mental Health Director
Dr. James Barron, Statewide Dental Health Director

- Physical Health
- Mental Health
- Dental Health

Office of Information Technology
Dan Brown, Director

Melinda Dennis, Director, Education
Donna Tebought, Director, Re-Entry Services

- Academic Education
- Career, Technical & Higher Education
- Chaplaincy
- Residential Substance Use Centers (RSATs)
- Cognitive Programming & Re-entry Services
- Library Services

Georgia Correctional Industries
Chris Tiller, Executive Director
Food & Farm